

ARAPAHOSTATION.COM

15555 N DALLAS PARKWAY, DALLAS, TX 75001

# ARAPAH STATION



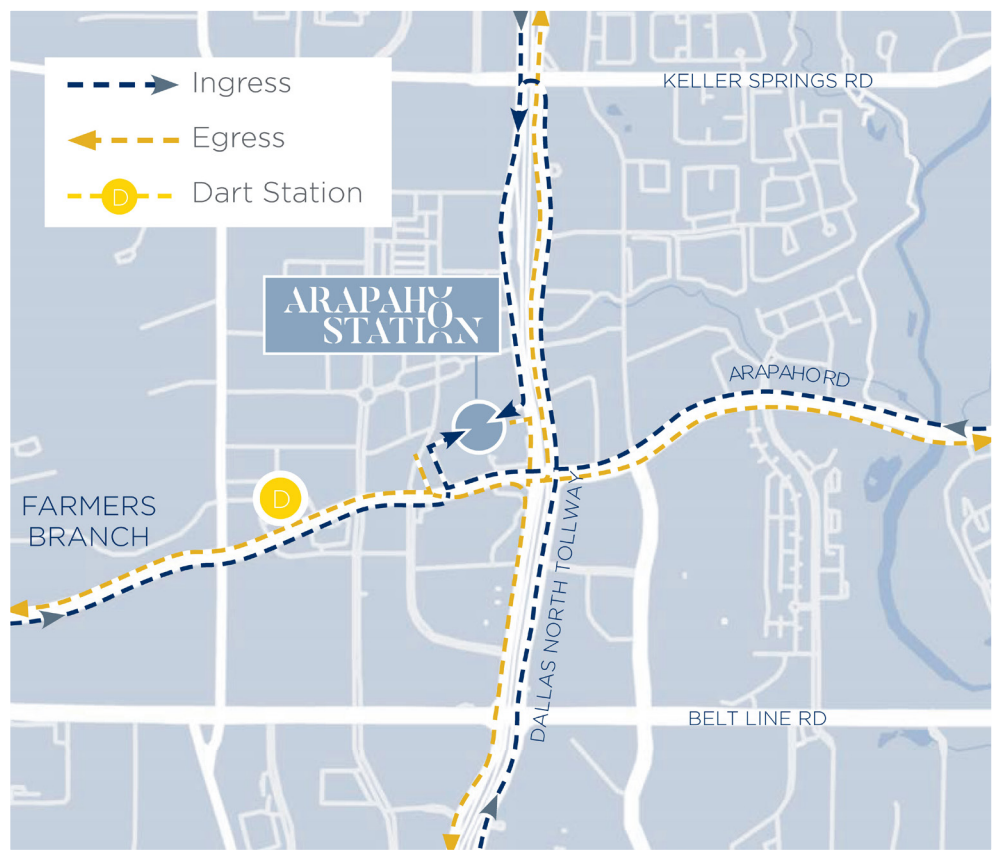


# ARAPAH STATION

Arapaho Station embodies a premier, modern workplace environment set in the prime location of North Dallas. Whether you enter via the Dallas North Tollway or the upcoming light rail station nearby, Arapaho Station invites you into an atmosphere centered on hospitality, boasting opulent design and cutting-edge collaborative, wellness, and social amenities. Stepping outside, you're greeted by the vibrant Addison Circle neighborhood, offering seamless walkability to an array of restaurants and retail opportunities, enriching your everyday experience.

EASILY  
ACCESSIBLE

ARAPAHO  
STATION



IN THE CENTER  
OF IT ALL

ARAPAHO  
STATION

2

MINS TO  
ADDISON CIRCLE



2

MINS TO  
FUTURE DART  
SILVER LINE



2

MINS TO  
ADDISON AIRPORT



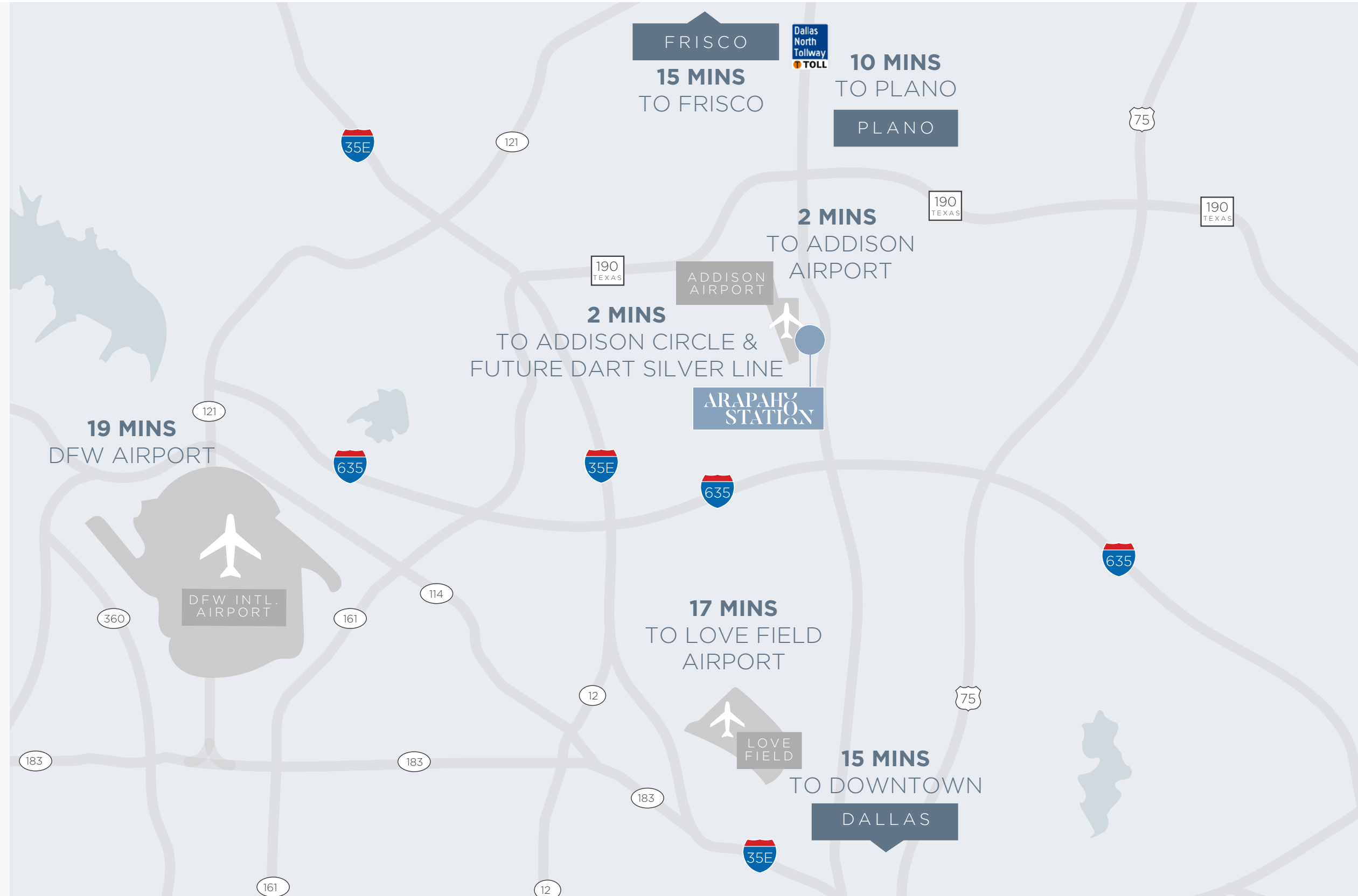
17

MINS TO  
LOVE FIELD AIRPORT



19

MINS TO DFW  
INTERNATIONAL AIRPORT



**264,599 RSF**

Total Building Size

**11**

Story  
Building

**27,591 RSF**

Typical  
Floorplate

**BALCONY**

Indoor/Outdoor Tenant Lounge  
with Balcony

**CAFE**

On-Site  
Cafe

**FITNESS**

Modern Fitness  
Center

**CONFERENCE**

State-of-the-art  
Conference/Training Facility

**4/1,000**

Garage  
Parking

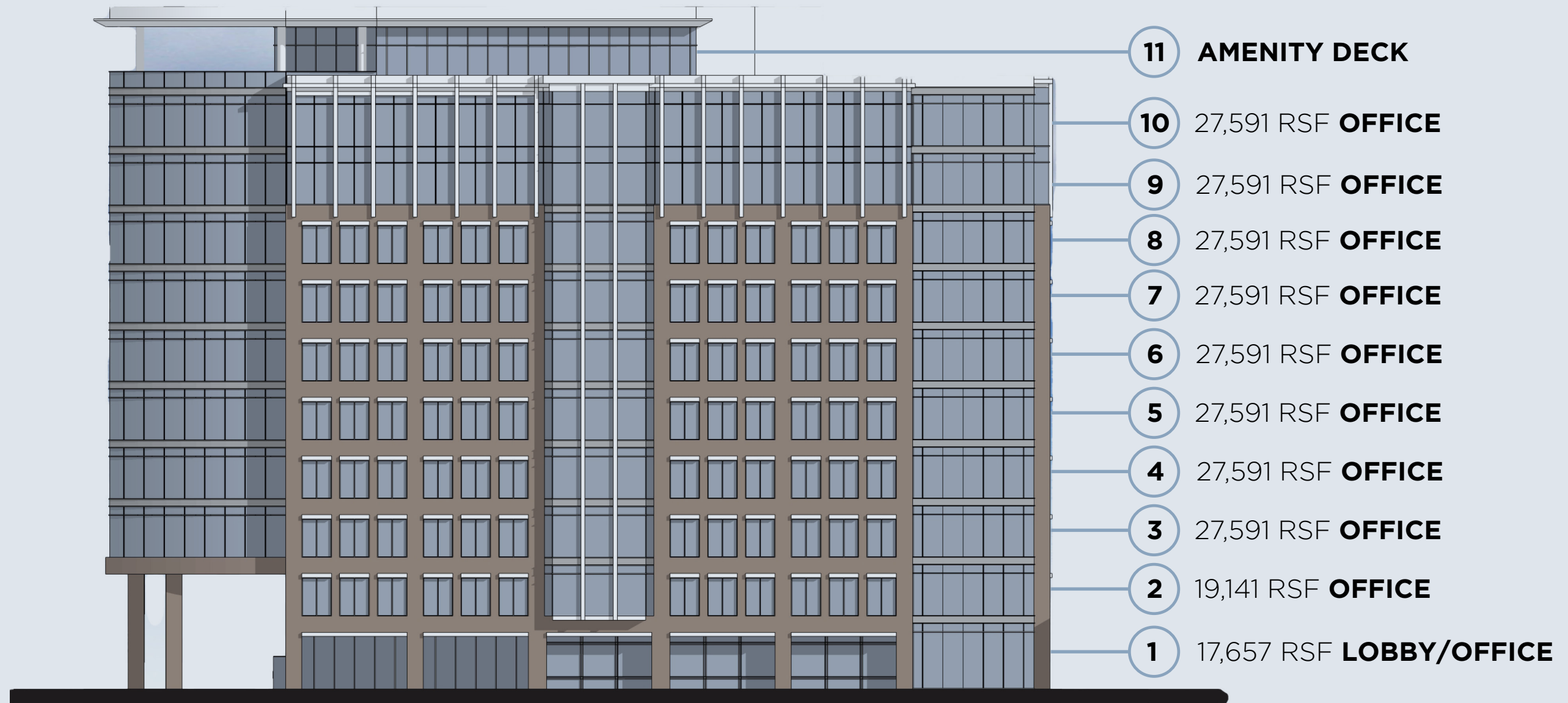
**WALKABILITY**

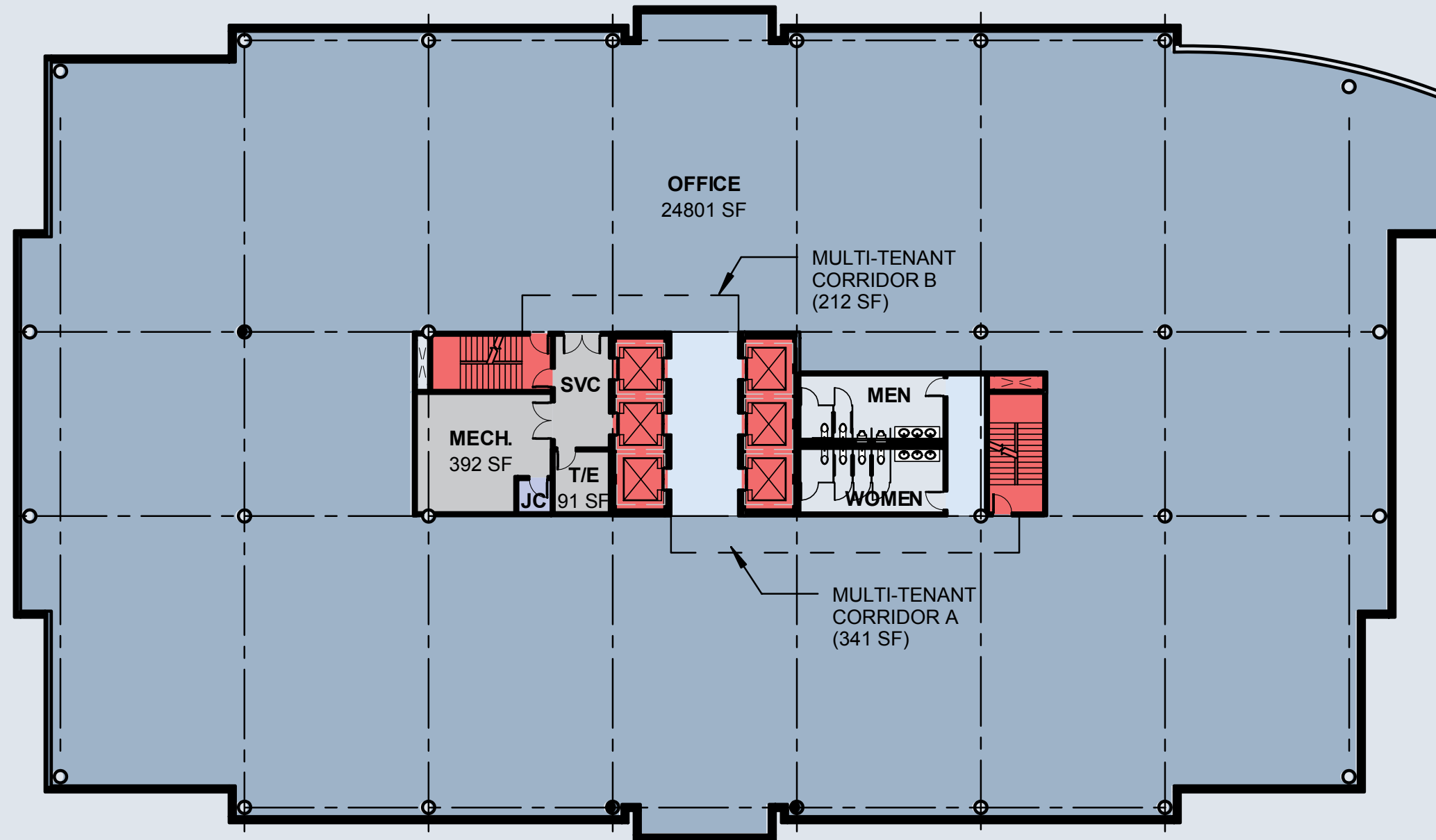
Walkability to Restaurants and Retail  
Options at Addison Circle

**ACCESS**

Immediate Access to the  
Tollway and DART







TYPICAL FLOOR: 27,591 RSF



# FIRST CLASS AMENITIES



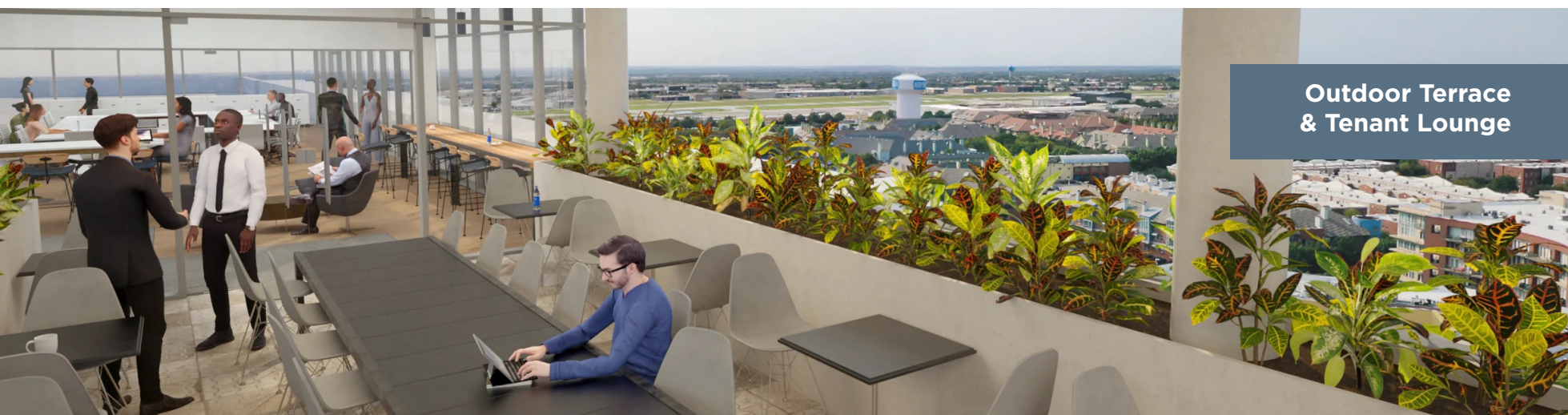
Conference and Training Facility



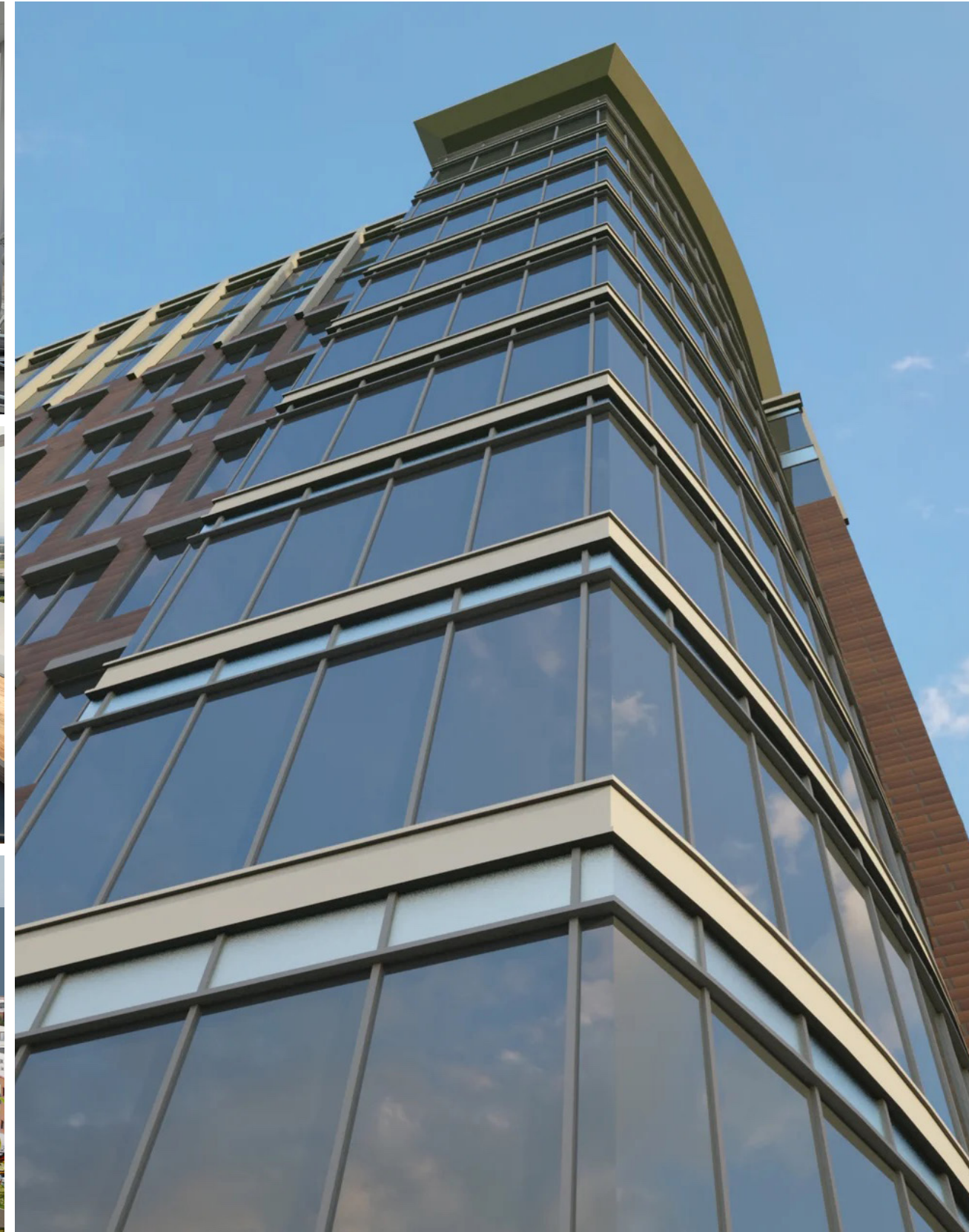
State of the Art Fitness Center and Locker Rooms



Collaborative Tenant Lounge



Outdoor Terrace & Tenant Lounge





WITHIN A  
2 MILE RADIUS

**300+**  
RESTAURANTS

**4,000+**  
HOTEL ROOMS

**15,000+**  
APARTMENT UNITS



HUDSON HOUSE



**EXPERIENCE VIP & EXCLUSIVE ACCESS, PARKING AND ROOFTOP VIEWING FOR ADDISON CIRCLE EVENTS**

**JUST STEPS FROM ADDISON  
CIRCLE PARK EVENTS**

TASTE ADDISON



KABOOM TOWN



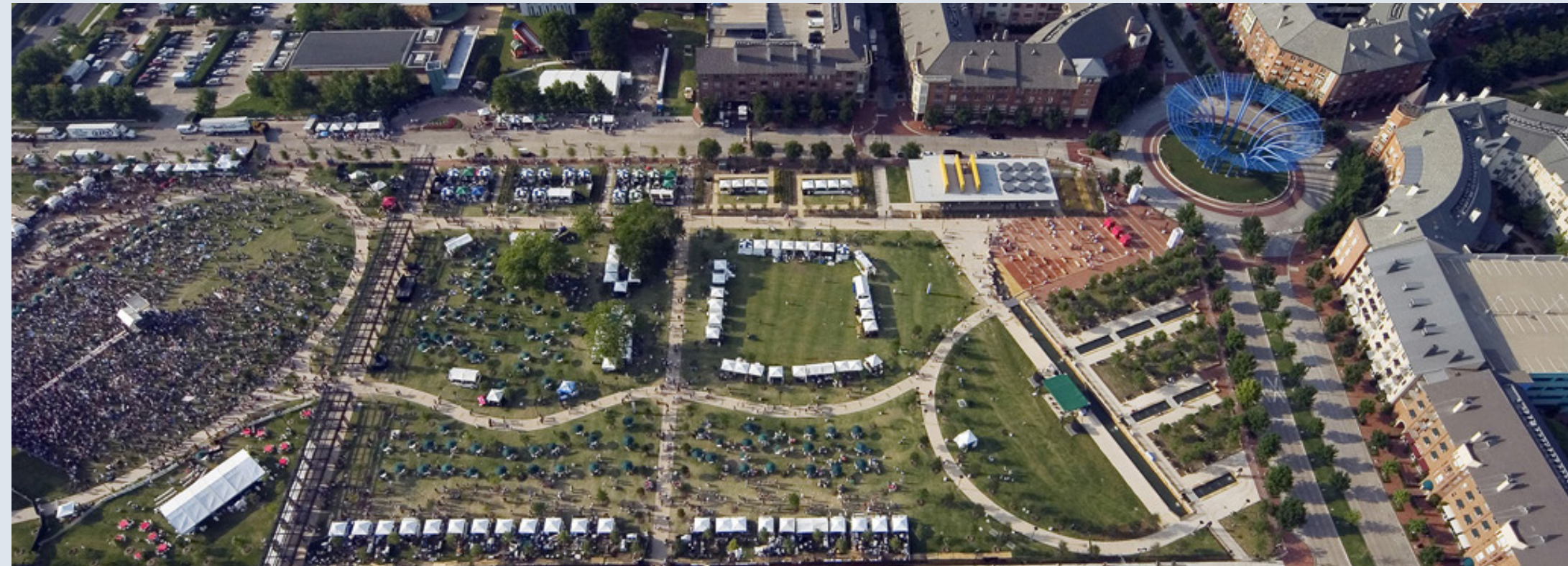
OKTOBERFEST



VITRUVIAN PARK



ADDISON AFTER DARK



**AMLI ADDISON DEVELOPMENT OVERVIEW**



- 18-Acre, \$472M Transit-Oriented Showplace at Addison Circle
- 650-car parking structure with ground-floor retail



- 13-story luxury, multi-family building with 9,000 SF of ground-floor retail
- 7-story luxury, multi-family building with additional 5,000 SF of retail space



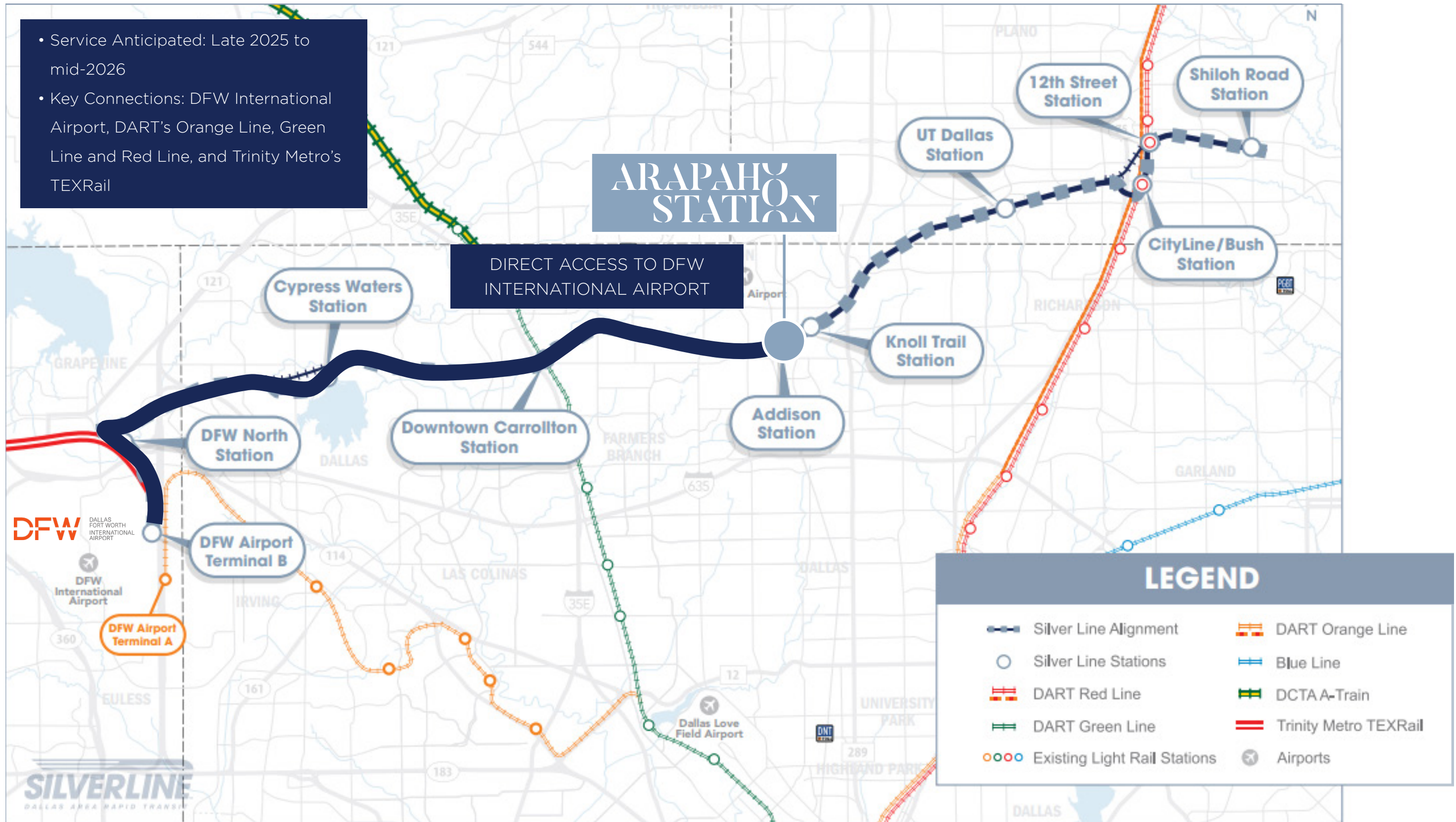
- 45,000 SF entertainment complex operated by The HUB, a Texas-based creator of entertainment venues and restaurants with an emphasis on daily events and festivals.



- Service Anticipated: Late 2025 to mid-2026
- Key Connections: DFW International Airport, DART's Orange Line, Green Line and Red Line, and Trinity Metro's TEXRail

## ARAPAHO STATION

DIRECT ACCESS TO DFW INTERNATIONAL AIRPORT



LEGEND	
	Silver Line Alignment
	Silver Line Stations
	DART Red Line
	DART Green Line
	Existing Light Rail Stations
	DART Orange Line
	Blue Line
	DCTA A-Train
	Trinity Metro TEXRail
	Airports





24 MONTH DEVELOPMENT TIMELINE



ARAPAHO  
STATION



**ARAPAHOSTATION.COM**

15555 N DALLAS PARKWAY, DALLAS, TX 75001

# ARAPAH STATION

**FOR LEASING INFORMATION**

**214.974.4334**

**SARAH KENNINGTON**

sarah.kennington@thirty-four.com

**BRYCE JACKSON**

bryce.jackson@thirty-four.com

**RUTH GRIGGS**

ruth.griggs@thirty-four.com



**VanTrust**<sup>®</sup>



**THIRTY-FOUR**  
COMMERCIAL